

Exclusive stately villa in Dalt Murada with spectacular views of the sea and Palma.



Price

8.500.000 €

Location

Centro-Casco Antiguo / Palma City / Sa Calatrava

Description

These are undoubtedly the most famous and beautiful views that show all the splendour of the city of Palma; those that we can contemplate from this great stately villa situated within Dalt Murada, the exclusive area at the top of the old city wall that forms the historic centre of Palma. From this magnificent property with the Parc de la Mar at its feet, we can see the imposing cathedral, distinguish some of the city's most impressive buildings and watch the sea flow across the bay of Palma and the Paseo Marítimo; whichever way you look, all the views are breathtaking.

The main streets and promenades of the city are just a few minutes walk from this great property, such as the Paseo Marítimo and the Paseo del Born, one of the most beautiful streets of Palma with the well-known Plaza de Juan Carlos I that reaches the Plaza de la Reina being crossed by the gardens of s'Hort del Rei and the palace of the Almudaina, as well as Palma's most emblematic cafés and first class boutiques.

This is the only property offered in this privileged area of Palma with these characteristics to invest in Patrimonio, refurbish it and turn it into an exclusive residence in one of the most beautiful cities with the best quality of life in the world.

With the idea of creating a great house of the highest quality and the best design, a refurbishment project has been drawn up for the client to contemplate the enormous potential of this property with the most modern architecture and paying special attention to all the details in order to carry out a refurbishment project full of elegance and comfort with respect for the architectural forms typical of this part of the city, where the rooms are presented as large, contemporary spaces flooded with light and the views are the true protagonists. The 875 m2 of surface area of the house are developed on two levels plus basement floor and are converted in this project into large open-plan rooms, with living rooms, dining rooms, large bedrooms, spacious kitchen, spa and gym areas, garage space for cars...

The large property has outdoor spaces that occupy almost 300 m2 with beautiful terraces where to place outdoor dining areas and comfortable corners to enjoy magnificent evenings with unbeatable views.

Contact us for more information about this exclusive property.

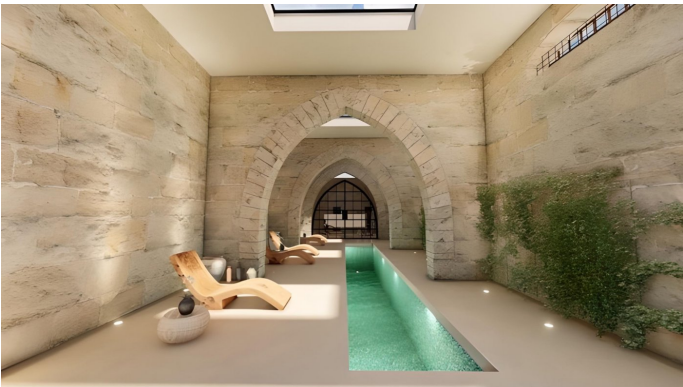
Details

Double room 5
Bathrooms 4
Floors 3
Living space 1173

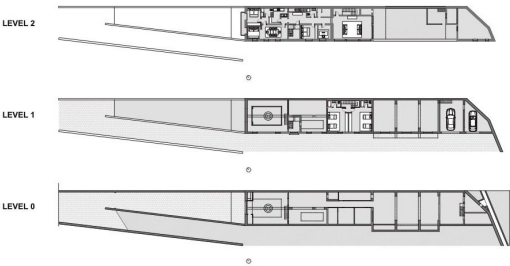
Extras

Laundry room
Patio

Photos



CURRENT PLANS



PROJECT DESIGN LAYOUT



