

**Modern, newly built, south facing duplex with garden, swimming pool and solarium with sea views.**

image not found or type unknown



## Price

1.350.000 €

## Location

Gènova-La Bonanova / Palma Area / La Bonanova

## Description

This magnificent newly built duplex apartment is located in the quiet residential area of Bonanova, only a short distance away from the centre of Palma as well as the beautiful beaches of Cala Mayor and San Agustin. Furthermore, it is located next to prestigious international schools and commercial centres with shops, supermarkets and all services.

There are 188 m<sup>2</sup> of surface carried out with first qualities and where the treatment of noble and natural materials such as wood and stone are key in the project. All this is combined with a palette of natural colours that, together with beautiful aesthetic elements such as the exposed beams and the incorporation of a home automation system, create atmospheres full of wellbeing and comfort.

The property has an excellent south orientation and is developed on two levels plus a splendid terrace-solarium from where one can enjoy fantastic views of the sea and the port of Palma.

On the entrance level there is a hall that distributes the rooms, with a bedroom, bathroom, toilet and an elegant and large living room with fireplace open to the dining room and the fully equipped kitchen with top of the range Miele appliances. All this space is perfectly illuminated by natural light enhanced by the white limestone walls and has access to the sunny garden with a private swimming pool and an area where you can sunbathe peacefully. A separate laundry area completes this level. The upper floor is entirely occupied by the master bedroom with en-suite bathroom and access to the upper terrace.

### FEATURES:

- Air conditioning hot/cold, underfloor heating, double glazing, domotic system, marble floors, fireplace.
- Separate open plan fitted kitchen. Miele appliances.
- Private garden and swimming pool, solarium, laundry.

### LOCATION:

- Residential area, clear views, sea views, close to international schools, close to shops, close to restaurants, 10 min.beaches, 10 min.Palma centre.

## Details

Double room 2

Bathrooms 3

Living space 208

Terrace area 163

## Extras

Air conditioning

Fitted wardrobes

Central heating

Heating

Fireplace

Laundry room

Private swimming pool

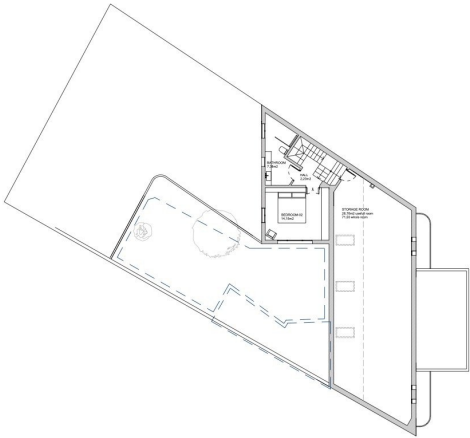
Solarium

Garden

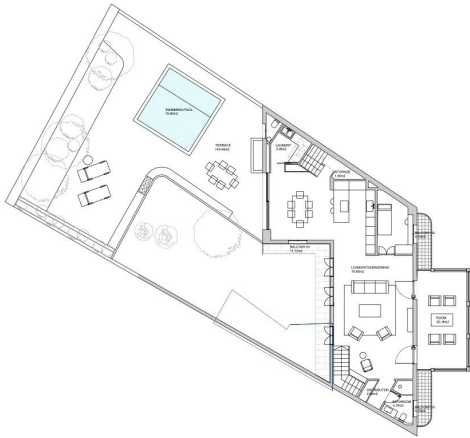
Terrace

Video door intercom system

Photos



FIRST FLOOR  
Scale: 1:100  
Architect: [illegible]



GROUND FLOOR  
Scale: 1:100  
Architect: [illegible]

