

Exceptional design and new build penthouse with high qualities next to the beach in El Portixol

Image not found or type unknown



Price

965.000 €

Location

Portixol-Molinar-Ciudad Jardin / Palma City /
Portixol-Molinar

Description

Living with all the comforts in the Portixol area between the sea and the city, where you can relax when you get home, take a walk, do sports or sit on any of its terraces facing the sea is possible in this excellent newly built penthouse that will be completed at the beginning of 2025 and that is located just a 3-minute walk from the charming Portixol beach.

The exceptional penthouse offers us 144 m2 of surface with interiors provided with all the comforts of today carried out with the best qualities and finishes within a design that bets on spaces full of light, contemporary, continuous and with durable and timeless materials.

It is distributed on two floors with a diaphanous piece of living room, dining room and Moderna kitchen integrated and equipped kitchen, two large double bedrooms with fitted wardrobes made to measure and two elegant bathrooms. The house is culminated by a fantastic terrace-solarium of 35 m2 as a stylish corner of peace and disconnection.

FEATURES:

- Air conditioning hot/cold, underfloor heating, double glazing, ceramic floor, fitted wardrobes, elevator.
- Open equipped kitchen
- Terrace-private solarium

LOCATION:

-3 min from the beach, next to restaurants, cafes and terraces, close to shops, next to promenade, 5 min. from the airport.

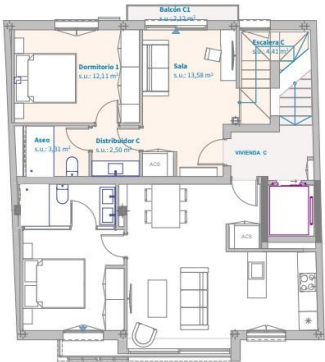
Details

Double room	2
Bathrooms	2
Year of construction	2025
Useful meters	105
Living space	144
Area plot	134

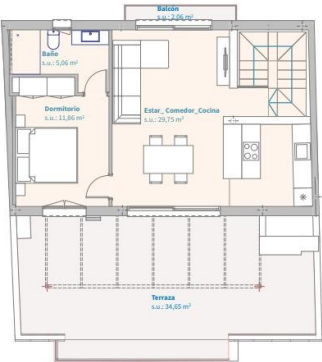
Extras

Air conditioning
Lift
Balcony
Central heating
Heating
Furniture
Solarium

Photos



Planta Piso Segunda. Vivienda C.



Planta Piso Tercera. Vivienda C.

